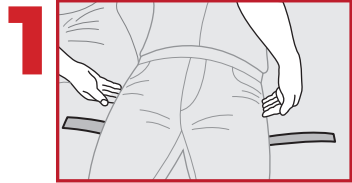


# Individual Direct Pressure Adjunct (IDPA™) Instructions

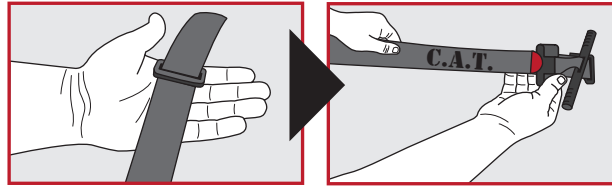
## Single TQ Configuration



Single TQ config compatible with: x1 SOF TQ

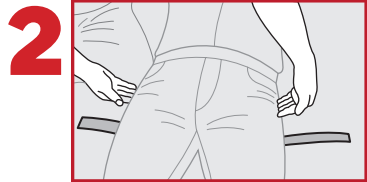
or

## Two TQ Configuration

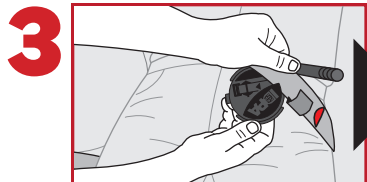


Two TQ config compatible with: x2 SAM XT (or) x2 CAT GEN 7

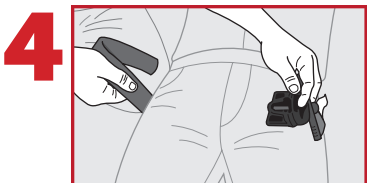
For two TQ config: Feed primary TQ through buckle of secondary TQ. Place tip of TQ next to Windlass Clip.



Fully extend TQ. Place TQ belt under back and shift downward until in-line with common landmarks.

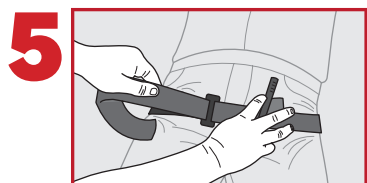


Feed blade of IDPA™ between windlass and “base plate”.



Offset device 1-2” laterally of desired location then feed tip of TQ through the TQ buckle.

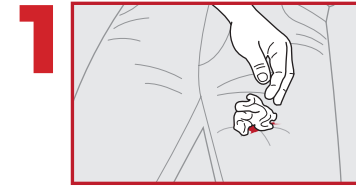
Stabilize IDPA™ with non-dominant hand.



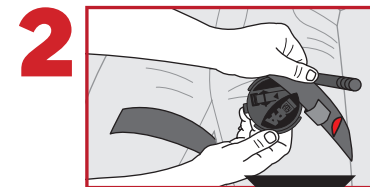
Pull until IDPA™ is providing adequate compression or occlusion of the desired area.



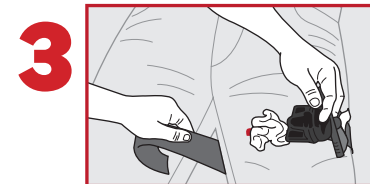
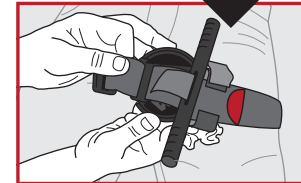
# Over a Dressed Wound



Locate center point of a dressed wound.



Feed blade of IDPA™ between windlass and “base plate”.

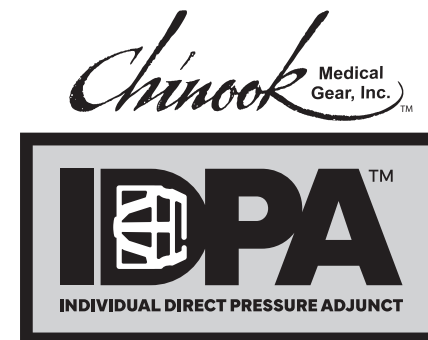
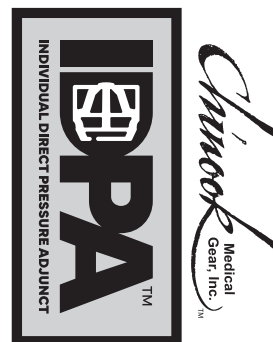


Offset device 1-2” laterally of desired location then feed tip of TQ through the TQ buckle.

Stabilize IDPA™ with non-dominant hand.



Pull until IDPA™ is providing adequate compression or occlusion of the desired area.



CAGE: 04J12  
NSN: PENDING

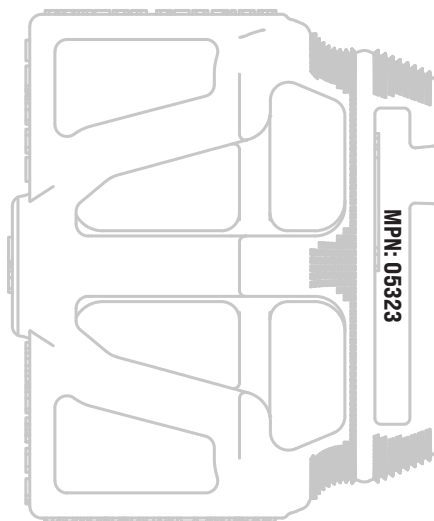
### LIMITATION OF LIABILITY:

Chinook Medical Gear, Inc., its employees, agents, contractors, distributors and suppliers shall assume no liability for injury or damages arising from the application and use of the Individual Direct Pressure Adjunct™ (IDPA™). The user assumes all risks of liability. The IDPA™ should only be used as directed by users military service component guidelines, EMS authority, or under the supervision of a physician.

### STANDARD USE GUIDELINES

When applied in accordance with directions, the IDPA™ is a safe and effective adjunct for controlling life-threatening bleeding. The IDPA™ must NOT be applied over solid objects within the clothing.

PATENT PENDING



05323CC REV000

Introducing the **Individual Direct Pressure Adjunct™ (IDPA™)** from Chinook Medical Gear. Our IDPA™ has been designed as a direct pressure adjunct to be placed on the appropriate pressure points and/or dressed wounds.

**INTENDED USE:** The IDPA™ is intended for use in controlling compressible hemorrhage in areas requiring additional pressure and providing hands-free compression on top of a dressed wound when attached to a tourniquet.

### INDICATIONS FOR USE:

1. Provides compression to control difficult bleeds when attached to a tourniquet, ACE wrap or elastic type bandage.

**NOTE:** Document time of IDPA™ TQ application and notify trained rescuer. Dispose of device in accordance with local protocols. Only medical personnel should remove IDPA™ once applied.



Exclusively manufactured in the U.S. by:  
Chinook Medical Gear | Tulsa, OK 74146  
Toll Free: 800-766-1365

[chinookmed.com](http://chinookmed.com)